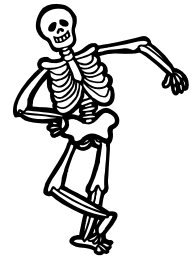




Student Newsletter



Out of Office

Emily will be away at the National Academic Advising Association's Annual National Conference in Denver, Colorado October 3rd—7th and will return Monday, October 10th. She will have limited email access and will return your emails when she can. For urgent matters, see Roxanna Russell in O&M 202 or call 979-862-3240.

Environment Café

Dates for the October cafés are the 12th from 9:30-10:30 and the 27th from 9:00-10:00 in O&M 109. Swing by to grab something to eat and drink, mingle with your peers, ask Dr. Collins, Emily or faculty questions, study, or do the Sudoku! The café on the 27th will be Halloween themed!!!

Environmental Programs Tailgate

The Environmental Programs will be hosting a tailgate by the O&M building for the Missouri game on October 29, 2011. All Environmental Programs' faculty, former students, current students, and their families are invited to attend. Please RSVP on the Facebook event or by emailing Emily at edykes@geos.tamu.edu so that we have a headcount for food. We will have BBQ with all the sides catered again this year. The game is currently scheduled for 2:30pm so the tailgate will begin at 11:30am. Keep an eye out for future emails if a change in game time will change the tailgate time.

December 2011 Graduates

Fall 2011 graduation for the College of Geosciences will take place on Saturday, December 17, 2011 at 9am. Please let your family know now so that can start making travel arrangements before hotels fill up!

May 2012 Graduates

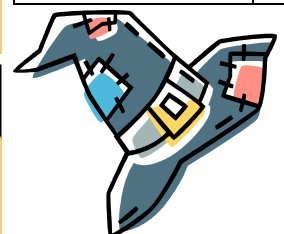
If you are planning to graduate in May 2012, please come see Emily in October to fill out any adjustment forms that are needed. That way your degree evaluation will reflect what you have left to graduate by the time you pre-register for the spring 2012 semester.

Facebook

If you have not already done so, please join the Environmental Programs Facebook group and add your Advisor, Emily Dykes as a friend.

Inside this issue:

Out of Office	1
Environment Café	1
ENVP Tailgate	1
December 2011 Grads	1
May 2012 Grads	1
Facebook	1
EPIC	2
Booking Appointments	2
Scholarship Deadlines	2
Survey	2
Hispanic Heritage Month	3
Q-drop Questions	3
Graduate and Professional School Day	3
Faculty Spotlight	4
Marine Population Dynamics Workshop	5
EPAC Student Corner	6
Upcoming Events	6



Environmental Programs' Involvement Committee (EPIC)

Upcoming events for EPIC:

- General membership meeting - 8PM O&M 110 on October 3
- EPIC hosts I-GEO students to Midnight Yell - FRIDAY, October 15 from 11pm to 1am
- General membership meeting - 8PM O&M 110 on October 17 (Dues are due)
- Movie night - 6PM O&M 112 on October 20. Movie TBD
- Halloween Social - 8pm O&M 112 on October 24

For more information, visit their website epic.tamu.edu.

Booking Appointments

If you would like to book an appointment with Emily, the best and easiest way is to go to envp.clickbook.net. This online appointment scheduling system allows you to select the reason for the appointment and an open time that works with your schedule. You must complete the free registration on the website to finalize the appointment scheduling, so if you have any issues with providing your phone number or email address on a third party website, you can still email, call, or Facebook Emily to make an appointment. Walk-ins are also still welcome.



Scholarship Deadlines

The [Goldwater Scholarship](#) is open to sophomores and juniors (by time to graduation) in math, science, and engineering. Suitable applicants should have high marks (3.7+), some research experience, and an intention of pursuing graduate study and a career in research. The scholarship provides up to \$7,500 in support and national recognition.

The [Truman Scholarship](#) is open to juniors in any field of study who are likely to pursue graduate study that leads to a career in public service. Students who are considering MPA, MPSA, MPH, MIA degrees, as well as law school, are ideal candidates. Career interests can include government employment, military service, education, work in the non-profit sector, the environment, etc. The scholarship provides up to \$30,000 in support for graduate school, access to high-level government internships, and numerous other professional development activities. Prestige is high, as only 60 to 65 Truman Scholars are selected nationwide.

Honors and Undergraduate Research will be hosting workshops on the Barry M. Goldwater Scholarship Monday, October 3rd at 4:30pm and Tuesday, October 4th at 11:30am in Henderson Hall Room 103. Workshops for the Harry S. Truman Scholarship will be Tuesday, October 4th at 4:30pm and Thursday, October 6th at 11:30am in Henderson Hall 103.

Both scholarships require university nomination - the campus deadline for applications is **November 2, 2011**. For further information about these and other scholarships, visit <http://nationalscholarships.tamu.edu>. Application instructions can be found at <http://honors.tamu.edu/Fellowships/Application%20Procedures.html>.

Survey

Emily will be emailing out a survey in early October that all current Environmental Programs students must fill out as part of our assessment this year or you will be blocked from preregistration. Details on how to complete the survey will be in the email. Don't worry, you will receive plenty of reminders via email and will have until November 4th to complete the 1 page survey.



Hispanic Heritage Month

There are some fantastic events taking place September 15 - October 15, 2011 in honor of the Hispanic Heritage Month including a Mr. & Miss Hispanic Heritage Month Pageant, Salsa Night, and a Documentary Film Series. Check out all of the events at: <http://dms.tamu.edu/hispanicmonth>.

Q-drop Questions

Considering Q-dropping? Here is what you should do first: 1. Have you been going to your professor's office hours? Have you talked to your professor about how you could improve in the class? If not, make an appointment with your professor. 2. Have you looked to see if there is any free tutoring offered on campus for your class? Check out the tutoring brochure published by the Student Counseling Services: <http://scs.tamu.edu/sites/default/files/tutoring.pdf>. 3. Check with Financial Aid if you have loans, grants or scholarships and with your health insurance company if you are on your parents' insurance because q-dropping a course may negatively affect your standing with them. If after all of the steps above you still want to Q-drop, fill out the form then bring it to Emily to discuss when you will retake the course if it is required.

Graduate & Professional School Day

Thursday, October 6, 2011 • 10am-2pm • Rudder Complex, 1st Floor

Visit with representatives from approximately 100 graduate programs and professional schools from Texas and across the nation. This **FREE** event is open to all current and former students & faculty and staff. No registration is required for attendees.



Spotlight

This month's Spotlight is Emily, the Academic Advisor for the Environmental Programs!

Name: Emily Dykes

Department: Environmental Programs in Geosciences

Birthday: April 21, 1986

Family: I met my husband, Ryan, on a blind date while we were both at Texas A&M and we have been married for 3.5 years. He is a Realtor and we live in Bryan with our pound puppy, Sam (pictured below).



Where did you get your undergraduate? I am Aggie Class of 2008 and received my degree in Environmental Studies.

How long have you been an advisor at A&M? Since the beginning of Fall 2008.

What do you enjoy most about advising? Getting to know the students and watching their personal and academic growth as they progress through their education. It is a really rewarding job and I hope that I make a positive impact in someone's life.

What do you find most annoying about college students? When they do not take advantage of all the resources online to answer their questions.

What are your hobbies? Whenever I have time I like to scrapbook. I also like to read and play games. I'm a Sudoku and logic puzzle nerd.

What was your first job you ever had? I coached at summer basketball camps in high school.

What did you want to be when you grew up? An astronomer.

If you were stuck on a deserted island, what 3 things would you want to have with you? Besides the typical life saving items, I would want to enjoy the alone time with chocolate, an ipad loaded with books and games, and a hammock.

If you could have any super hero power, what would you have? The ability to travel through time and space. I would never have to drive or fly again, I could just appear wherever I wanted to go. Talk about being environmentally friendly!

If you had a million dollars, what would you do with it? Save some for retirement and my future kids' colleges. Then I would use some to travel. There are so many places I want to go!

If you had a time machine, where would you go? Early 1800s in America to ask my ancestors some questions because I am working on my family and my husband's family's genealogy but have gotten stuck!

Anything else you would like to add? I am here to help out whenever you have questions or get into a bind, but I also like to hear good news every now and then too! I live vicariously through my students who go on study abroad and like to get souvenirs and see pictures from their trips. 😊



Attention Sophomores, Juniors, and Seniors
All-Expenses-Paid Educational Opportunity in Florida for 2012

March 4-10, 2012

Application Deadline

November 21, 2011

Ninth Annual

Marine Resources Population Dynamics

Workshop

Presented by the National Marine Fisheries Service and the University of Florida

During this weeklong workshop, select undergraduate students from across the nation will explore the dynamics of marine populations. Participants will investigate case studies involving current issues in marine conservation and fisheries management.

The workshop is intended for students with strong quantitative backgrounds and interests, and a basic understanding of ecology, who wish to explore the potential for a career in the management of marine resources. We encourage applications from students majoring in Biology, Conservation Biology, Ecology, Fisheries, Marine Biology, Natural Resource Management, Applied Mathematics, Statistics, Wildlife Science and other related fields.

Selected students will have all expenses paid; including travel, housing, meals, supplies, etc.

The workshop is based at the Mote Tropical Research Laboratory on Summerland Key, Florida and facilitated by faculty from the University of Florida and scientists from the National Marine Fisheries Service. Coursework, fieldwork, and social activities are designed to demonstrate to participants the critical role modeling population dynamics plays in resource management decisions. Participants are given the opportunity to build new friendships with aspiring students from across the nation and network with faculty and agency scientists. It's a once-in-a-lifetime opportunity.

Applications are now being accepted for the competitive selection process. A maximum of 15 students will be accepted. For application materials or more information e-mail UF-NMFS@ifas.ufl.edu, go to <http://fishweb.ifas.ufl.edu/rtr/index.shtml>, or call (352) 273-3624.



Over the past eight years, 121 students representing 27 states and 67 colleges and universities have learned about population dynamics, exciting research projects, graduate schools, and careers. This is an all-expenses paid opportunity you shouldn't miss!

"It was a good mix of work and fun, and the two consistently overlapped!"

"This was great! Thank you! I received a great amount of guidance for my life and career, and had a wonderful time (both in class and out!)."

100% of the workshop participants agreed that they would recommend this workshop to others.

71% of workshop participants agreed that they had developed a clearer sense of what they would like to do for a career.



Emily Dykes
Academic Advisor II
Phone: 979-845-2559
Fax: 979-845-0056
E-mail:
edykes@geos.tamu.edu

Texas A&M University
O&M 105

Schedule an appointment
with Emily at
envp.clickbook.net



EPAC Student Representative Corner

If you have any questions or concerns you would like your Student Representative to bring up at our next meeting, please email one of them below.

ENST: Matt Green mwgreen@neo.tamu.edu

Jarrett Poe jpoe322@neo.tamu.edu

ENGS: Jeanne Eckhart jeanne2d_eckhart@neo.tamu.edu

Manny Hernandez manwell@neo.tamu.edu

Happy Halloween!



Upcoming Events in October

3rd-7th—Environmental Programs Office
Closed

3rd—Goldwater Scholarship Workshop
4:30pm
Henderson 103

3rd—EPIC meeting
8:00pm
O&M 110

4th—Goldwater Scholarship Workshop
11:30am
Henderson 103

4th— Truman Scholarship Workshop
4:30pm
Henderson 103

6th— Truman Scholarship Workshop
11:30am
Henderson 103

6th—Graduate and Professional School Day
10:00am-2:00pm
Rudder 1st floor

12th—Environment Café
9:30-10:30
O&M 109

17th—Noon. Mid-semester grades due

17th—EPIC meeting
8:00pm
O&M 110

20th—EPIC Movie Night
6pm
O&M 112



24th—EPIC Halloween Social
8pm
O&M 112

27th—Environment Café
9-10:00
O&M 109

29th—Environmental Programs Tailgate

31st—Halloween!